

# Exploring the Zones

Upon arrival, nature invites you in. Stroll through the terrace gardens, or be greeted by the tranquil Waterwall Courtyard lined with a canopy of greens hanging above the arrival court.



BP NO. :  
A1716-00015-2020-BP01 DATED 05 FEBRUARY 2021  
A1716-00015-2020-BP02 DATED 07 MAY 2021



- A** Arrival Court
- B** Guard House
- C** Side Gate
- D** Management Office

## Basement

- E** Bicycle parking
- F** Bin Centre
- G** Substation
- H** Genset
- Water Tank

## The Waters

- 1** Water Hammocks
- 2** 50m Lap Pool
- 3** Jacuzzi Lounger
- 4** Cabana Deck
- 5** Party Jacuzzi
- 6** Jacuzzi Alcove
- 7** Waterwall Courtyard
- 8** Forest Pool
- 9** Water Jet Terrace
- 10** Sun Pool
- 11** Rain Pool
- 12** Water Play Slide
- 13** Jacuzzi Island
- 14** Aqua Gym Pool
- 15** Reflective Pool
- 16** Children's Pool
- 17** Tranquil Spring

## The Gardens

- 18** Pebbles Gravel Pods
- 19** Rocks & Reflexology trail
- 20** Garden Hammocks
- 21** Blossom Garden
- 22** Flower Garden
- 23** Recreation Lawn
- 24** Sculpture Garden
- 25** Garden Lounger
- 26** Swing Garden
- 27** Play Lawn
- 28** Fun Trail
- 29** Whimsical Play Garden
- 30** Yoga Lawn
- 31** Jogging Trail
- 32** Meadow Garden
- 33** Forest Cocoon
- 34** Teepee Decks
- 35** Pet's Run
- 36** Terrace Gardens
- 37** Spice and Scent Garden
- 38** Hedge Garden
- 39** Swale Garden
- 40** Fireflies Garden
- 41** Green Lawn
- 42** Garden Lawn
- 43** Outdoor Chess Garden

## The Social

- 44** Early Childhood Development Centre Facility (ECDC)
- 45** Grill Pavilion (BBQ 1)
- 46** Savory Gardens & Harvest Pavilion
- 47** Gym
- 48** Function Room 1
- 49** Function Room 2
- 50** Waterfront Party Pavilion (BBQ 2)
- 51** Music Room
- 52** Games Room
- 53** Karaoke Room
- 54** Function Room 3
- 55** Outdoor Gym
- 56** Fitness Pavilion
- 57** Dining Pavilion
- 58** Gourmet Pavilion
- 59** Reading Corner
- 60** Meditation Pavilion
- 61** Floating Pavilion

# Choice Units

**27** CANBERRA DRIVE

	1	2	3	4	5	6	7
5	2C5	2P2-PH	3C2-PH	2C2	2P3-PH	3C4-PH	2C5
4	2C5	2P2	3C2	2C2	2P3	3C4	2C5
3	2C5	2P2	3C2	2C2	2P3	3C4	2C5
2	2C5	2P2	3C2	2C2	2P3	3C4	2C5
1	2C5	2P2	3C2	2C2	2P3	3C4	2C5

**29** CANBERRA DRIVE

	8	9	10	11	12	13
5	2P5-PH	2PS2-PH	2PS2-PH	2C3	3C3-PH	3C2-PH
4	2P5	2PS2	2PS2	2C3	3C3	3C2
3	2P5	2PS2	2PS2	2C3	3C3	3C2
2	2P5	2PS2	2PS2	2C3	3C3	3C2
1	2P5	2PS2	2PS2	2C3	3C3	3C2

**31** CANBERRA DRIVE

	14	15	16	17	18	19
5	2C1	3C2-PH	2P1-PH	2C1	3C1-PH	2P1-PH
4	2C1	3C2	2P1	2C1	3C1	2P1
3	2C1	3C2	2P1	2C1	3C1	2P1
2	2C1	3C2	2P1	2C1	3C1	2P1
1	2C1	3C2	2P1	2C1	3C1	2P1

**33** CANBERRA DRIVE

	20	21	22	23	24	25
5	2C1	2P1-PH	3C2-PH	2C1	2P1-PH	3C1-PH
4	2C1	2P1	3C2	2C1	2P1	3C1
3	2C1	2P1	3C2	2C1	2P1	3C1
2	2C1	2P1	3C2	2C1	2P1	3C1
1	2C1	2P1	3C2	2C1	2P1	3C1

**35** CANBERRA DRIVE

	26	27	28	29	30	31
5	2P5-PH	2P3-PH	3C2-PH	2C3	3C3-PH	2P3-PH
4	2P5	2P3	3C2	2C3	3C3	2P3
3	2P5	2P3	3C2	2C3	3C3	2P3
2	2P5	2P3	3C2	2C3	3C3	2P3
1	2P5			2C3	3C3	2P3

**37** CANBERRA DRIVE

	32	33	34	35
5	2P7-PH	4P2-PH	3PS3-PH	4P2-PH
4	2P7	4P2	3PS3	4P2
3	2P7	4P2	3PS3	4P2
2	2P7	4P2	3PS3	4P2
1	2P7	4P2	3PS3	4P2

**39** CANBERRA DRIVE

	36	37	38	39
5	4P1-PH	3PS2-PH	3PS2-PH	4P1-PH
4	4P1	3PS2	3PS2	4P1
3	4P1	3PS2	3PS2	4P1
2	4P1	3PS2	3PS2	4P1
1	4P1	3PS2-P	3PS2-P	4P1

**41** CANBERRA DRIVE

	40	41	42	43
5	4P2-PH	3PS3-PH	4P2-PH	2P7-PH
4	4P2	3PS3	4P2	2P7
3	4P2	3PS3	4P2	2P7
2	4P2	3PS3	4P2	2P7
1	4P2	3PS3	4P2	2P7

**43** CANBERRA DRIVE

	45	46	47	48	49	50
5	3C2-PH	3C3-PH	2C4	3PS1-PH	3C2-PH	2P5-PH
4	3C2	3C3	2C4	3PS1	3C2	2P5
3	3C2	3C3	2C4	3PS1	3C2	2P5
2	3C2	3C3	2C4	3PS1	3C2	2P5
1	3C2	3C3	2C4	3PS1	3C2	2P5

**45** CANBERRA DRIVE

	51	52	53	54
5	4P1-PH	3PS2-PH	3PS2-PH	4P1-PH
4	4P1	3PS2	3PS2	4P1
3	4P1	3PS2	3PS2	4P1
2	4P1	3PS2	3PS2	4P1
1	4P1	3PS2	3PS2	4P1

**47** CANBERRA DRIVE

	55	56	57	58	59	60
5	2P5-PH	3C2-PH	3C2-PH	2C4	3C3-PH	3PS1-PH
4	2P5	3C2	3C2	2C4	3C3	3PS1
3	2P5	3C2	3C2	2C4	3C3	3PS1
2	2P5	3C2	3C2	2C4	3C3	3PS1
1	2P5	3C2	3C2	2C4	3C3	3PS1

**49** CANBERRA DRIVE

	61	62	63	64	65	66
5	3PS1-PH	3C3-PH	2C4	2P3-PH	3C2-PH	2P5-PH
4	3PS1	3C3	2C4	2P3	3C2	2P5
3	3PS1	3C3	2C4	2P3	3C2	2P5
2	3PS1	3C3	2C4	2P3	3C2	2P5
1	3PS1	3C3	2C4	2P3	3C2	2P5

**51** CANBERRA DRIVE

	67	68	69	70
5	4P1-PH	3PS2-PH	3PS2-PH	4P1-PH
4	4P1	3PS2	3PS2	4P1
3	4P1	3PS2	3PS2	4P1
2	4P1	3PS2	3PS2	4P1
1	4P1	3PS2	3PS2	4P1

**53** CANBERRA DRIVE

	71	72	73	74
5	4P1-PH	3PS2-PH	3PS2-PH	4P1-PH
4	4P1	3PS2	3PS2	4P1
3	4P1	3PS2	3PS2	4P1
2	4P1	3PS2	3PS2	4P1
1	4P1	3PS2	3PS2	4P1

**55** CANBERRA DRIVE

	75	76	77	78	79	80	81	82
5	2P6-PH	3C4-PH	2P2-PH	2C2	2C2	2PS1-PH	3CS1-PH	2P6-PH
4	2P6	3C4	2P2	2C2	2C2	2PS1	3CS1	2P6
3	2P6	3C4	2P2	2C2	2C2	2PS1	3CS1	2P6
2	2P6	3C4	2P2	2C2	2C2	2PS1	3CS1	2P6
1	2P6	3C4	2P2	2C2	2C2	2PS1	3CS1	2P6

**57** CANBERRA DRIVE

	83	84	85	86	87	88	89	90	91
5	2P5-PH	2P4-PH	3CS1-PH	2PS1-PH	2C2	2C2	2P2-PH	2P2-PH	2P4-PH
4	2P5	2P4	3CS1	2PS1	2C2	2C2	2P2	2P2	2P4
3	2P5	2P4	3CS1	2PS1	2C2	2C2	2P2	2P2	2P4
2	2P5	2P4	3CS1	2PS1	2C2	2C2	2P2	2P2	2P4
1	2P5	2P4	3CS1	2PS1	2C2	2C2	2P2	2P2	2P4

## LEGEND

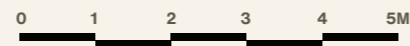
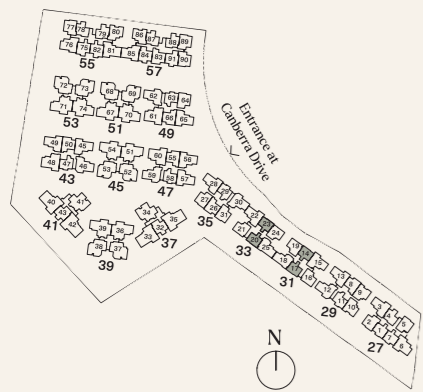
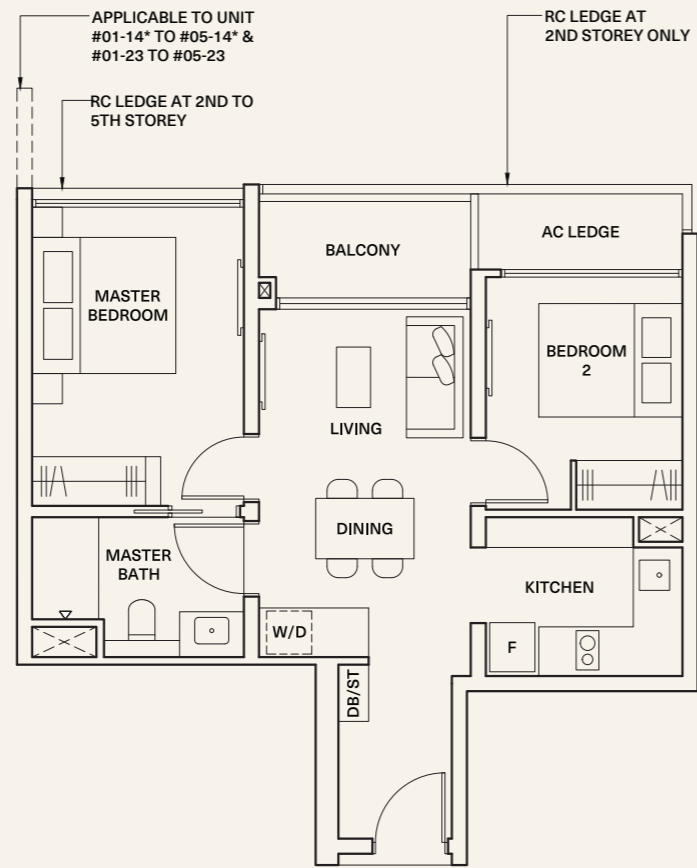
2 Bedroom					2 Bedroom Premium							2 Bedroom Premium + Study				3 Bedroom				3 Bedroom + Study			3 Bedroom Premium + Study				4 Bedroom Premium	
2C1	2C2	2C3	2C4	2C5	2P1	2P2	2P3	2P4	2P5	2P6	2P7	2PS1	2PS2	3C1	3C2	3C3	3C4	3CS1	3PS1	3PS2	3PS2-P	3PS3	4P1	4P2				
646 sqft					721 sqft							797 sqft				904 sqft				1012 sqft			1109 sqft				1302 sqft	
					753 sqft							969 sqft				1076 sqft				1206 sqft			1324 sqft				1528 sqft	
					2P1-PH	2P2-PH	2P3-PH	2P4-PH	2P5-PH	2P6-PH	2P7-PH	2PS1-PH	2PS2-PH	3C1-PH	3C2-PH	3C3-PH	3C4-PH	3CS1-PH	3PS1-PH	3PS2-PH	3PS3-PH	4P1-PH	4P2-PH					
					872 sqft							926 sqft				936 sqft				872 sqft			904 sqft				893 sqft	

● 2 Bedroom

TYPE 2C1

SIZE 60 sqm (646 sqft)

\*Mirror  
 #01-17 to #05-17 #01-14\* to #05-14\*  
 #01-23 to #05-23 #01-20\* to #05-20\*



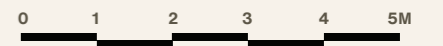
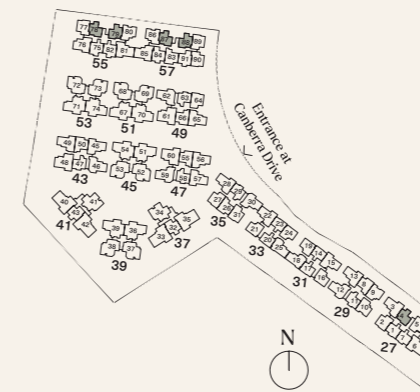
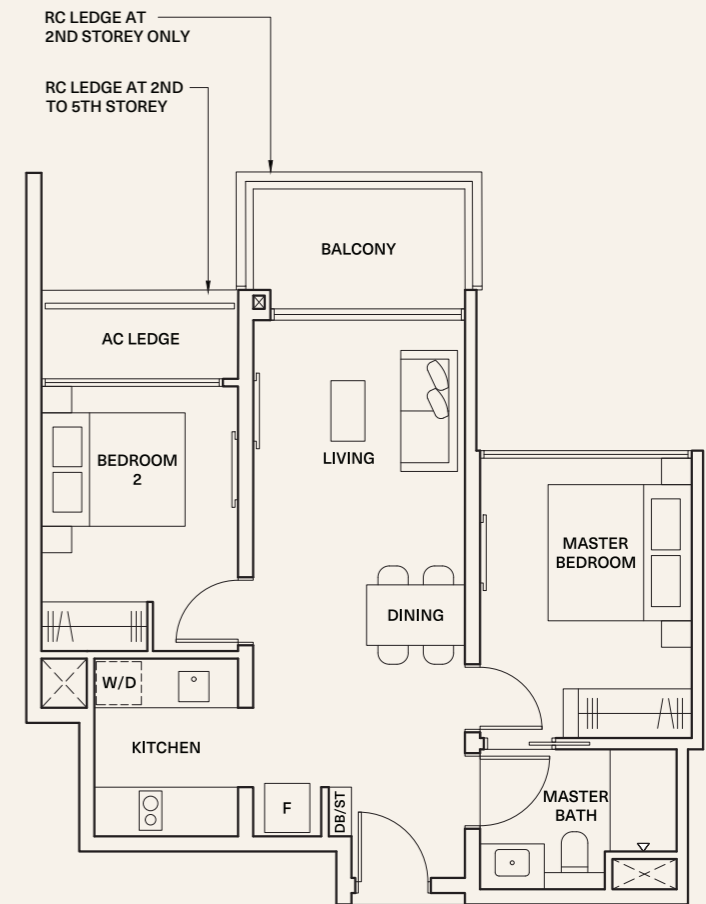
Areas include AC ledge and balcony, where applicable. All RC ledges are non-load bearing. The plans are subjected to change as may be required by relevant authorities. All areas and measurements stated herein as approximate and subject to final survey.

● 2 Bedroom

TYPE 2C2

SIZE 63 sqm (678 sqft)

\*Mirror  
 #01-04 to #05-04 #01-79\* to #05-79\*  
 #01-78 to #05-78 #01-88 to #05-88\*  
 #01-87 to #05-87



Areas include AC ledge and balcony, where applicable. All RC ledges are non-load bearing. The plans are subjected to change as may be required by relevant authorities. All areas and measurements stated herein as approximate and subject to final survey.

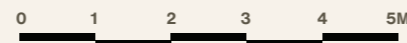
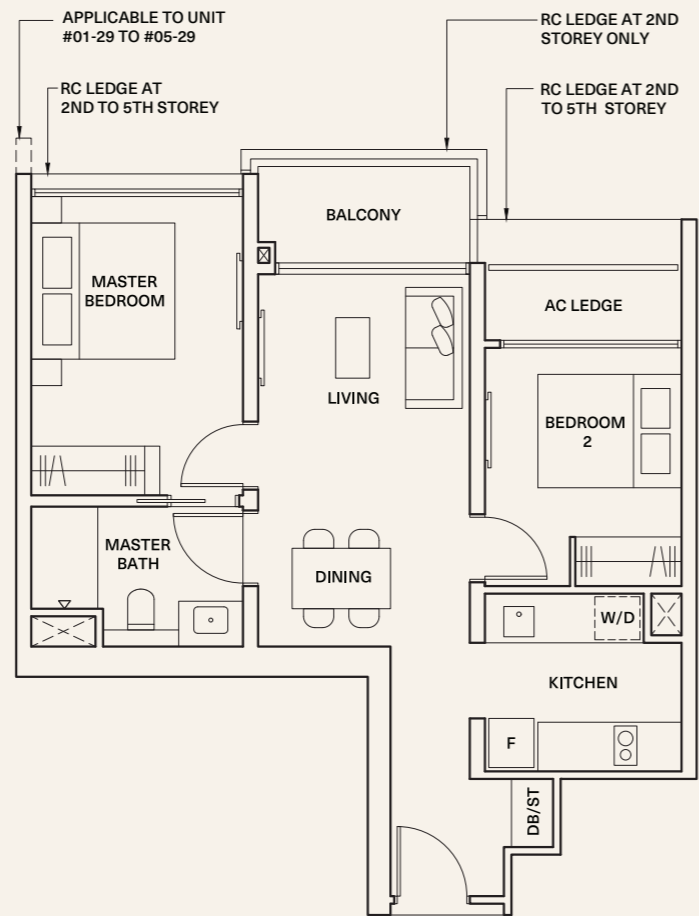


● 2 Bedroom

TYPE 2C3

SIZE 63 sqm (678 sqft)

#01-11 to #05-11  
#01-29 to #05-29



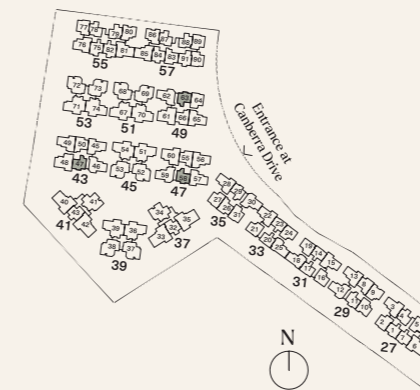
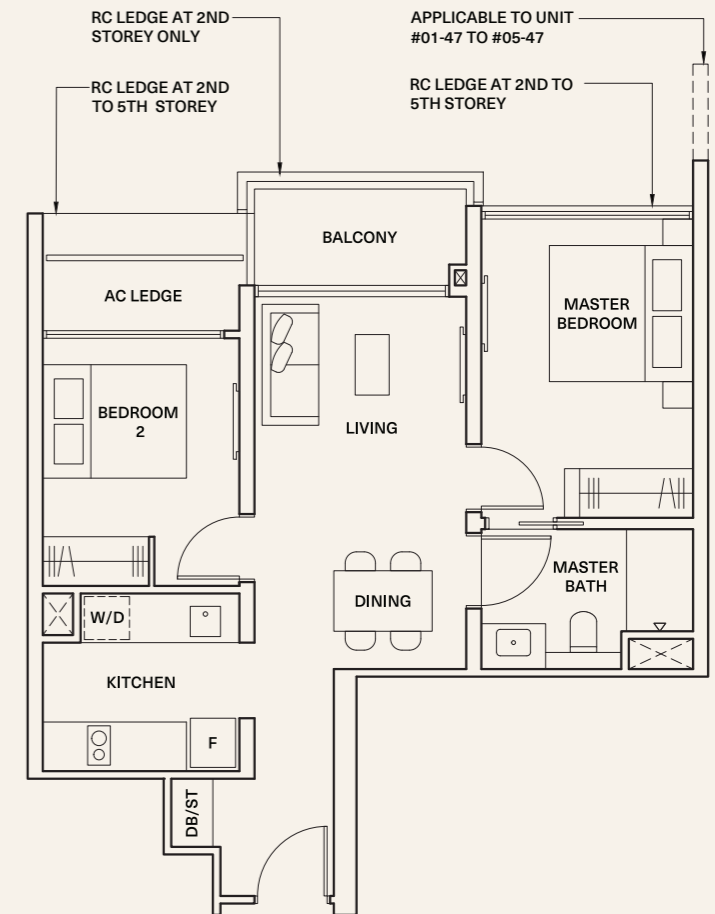
Areas include AC ledge and balcony, where applicable. All RC ledges are non-load bearing. The plans are subjected to change as may be required by relevant authorities. All areas and measurements stated herein as approximate and subject to final survey.

● 2 Bedroom

TYPE 2C4

SIZE 63 sqm (678 sqft)

\*Mirror  
#01-47 to #05-47 #01-58\* to #05-58\*  
#01-63 to #05-63

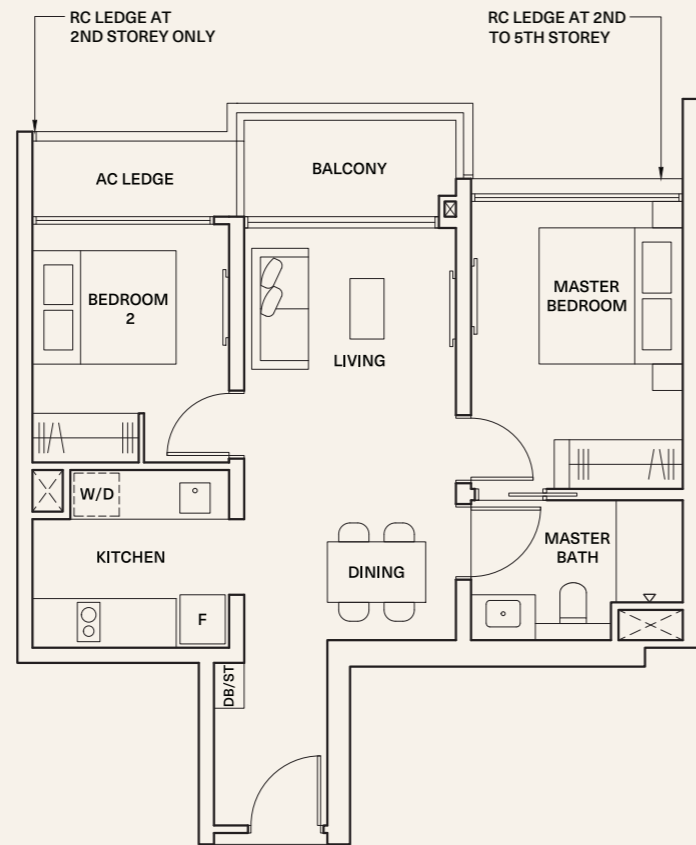


Areas include AC ledge and balcony, where applicable. All RC ledges are non-load bearing. The plans are subjected to change as may be required by relevant authorities. All areas and measurements stated herein as approximate and subject to final survey.

● 2 Bedroom

TYPE 2C5  
 SIZE 63 sqm (678 sqft)

#01-01 to #05-01 \*Mirror  
 #01-07\* to #05-07\*

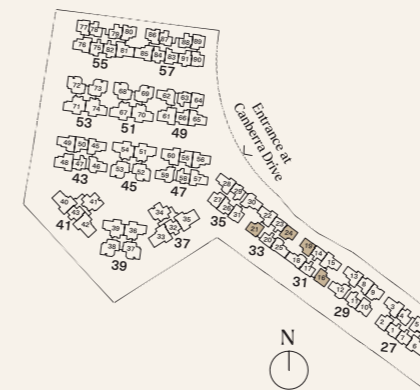
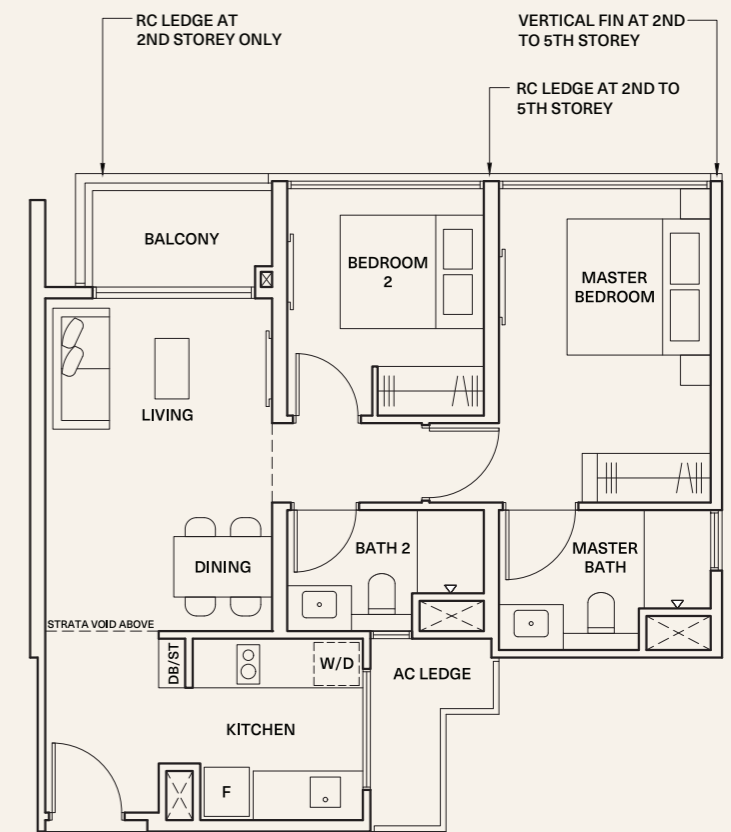


Areas include AC ledge and balcony, where applicable. All RC ledges are non-load bearing. The plans are subjected to change as may be required by relevant authorities. All areas and measurements stated herein as approximate and subject to final survey.

● 2 Bedroom Premium

TYPE 2P1  
 SIZE 67 sqm (721 sqft)

#01-21 to #04-21 \*Mirror  
 #01-24 to #04-24 #01-16\* to #04-16\*  
 #01-19\* to #04-19\*



Areas include AC ledge and balcony, where applicable. All RC ledges are non-load bearing. The plans are subjected to change as may be required by relevant authorities. All areas and measurements stated herein as approximate and subject to final survey.

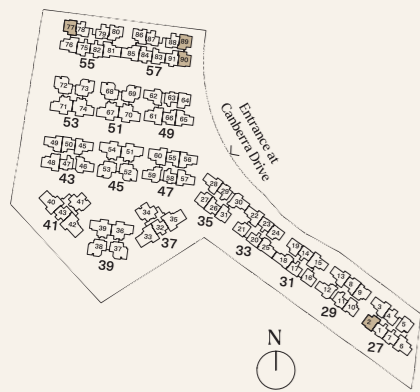
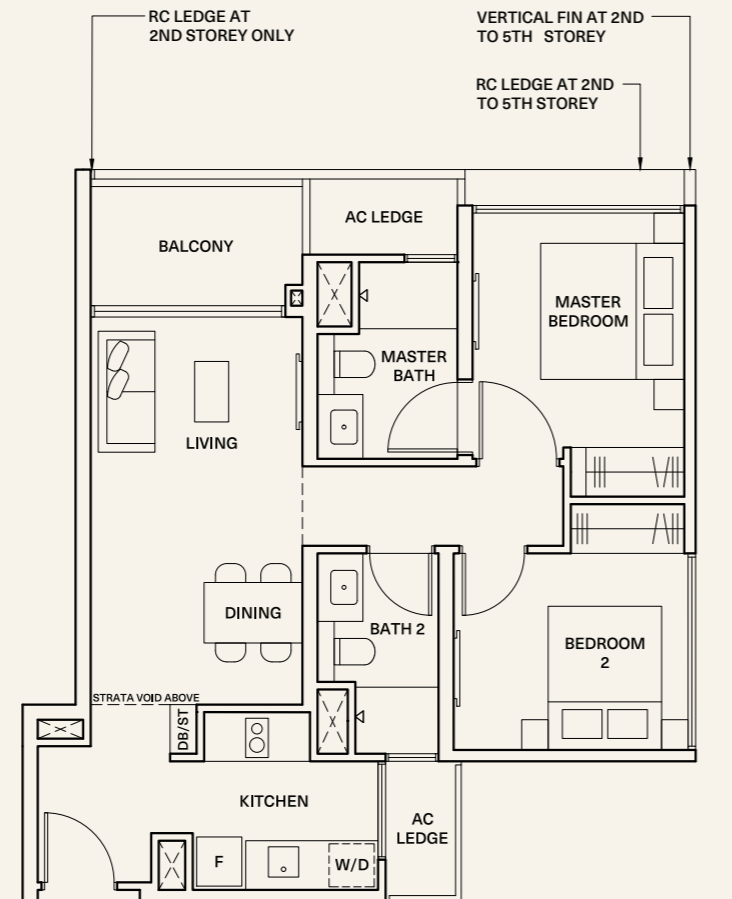
TYPE 2P1-PH  
 SIZE 81 sqm (872 sqft)

Inclusive of strata void area of 14 sqm / 151 sqft above living and dining  
 \*Mirror  
 #05-21 #05-16\*  
 #05-24 #05-19\*

● 2 Bedroom Premium

TYPE 2P2  
 SIZE 70 sqm (753 sqft)

\*Mirror  
 #01-02 to #04-02 #01-77\* to #04-77\*  
 #01-89 to #04-89 #01-90\* to #04-90\*

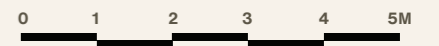
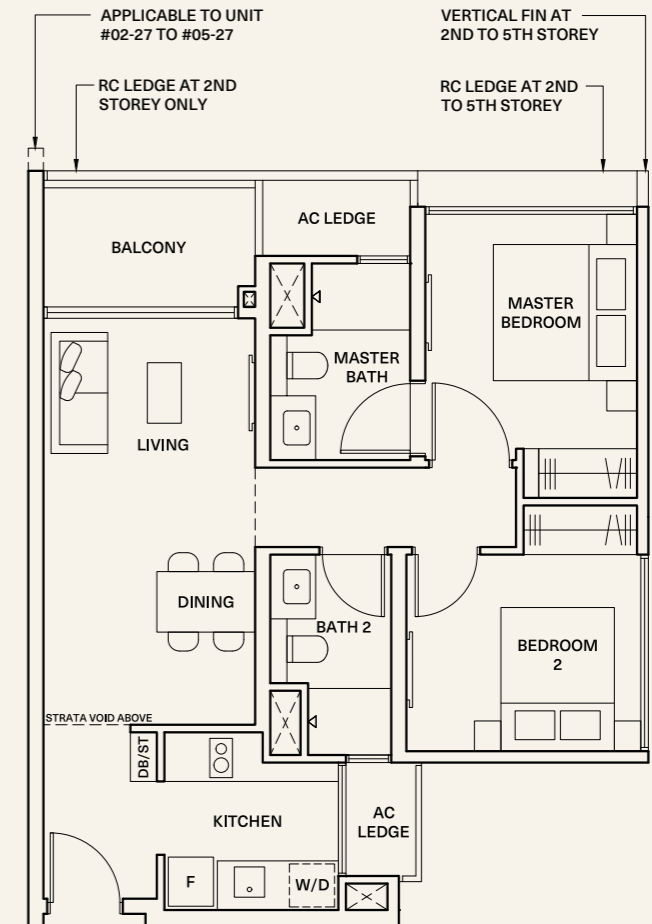


Areas include AC ledge and balcony, where applicable. All RC ledges are non-load bearing. The plans are subjected to change as may be required by relevant authorities. All areas and measurements stated herein as approximate and subject to final survey.

● 2 Bedroom Premium

TYPE 2P3  
 SIZE 70 sqm (753 sqft)

\*Mirror  
 #01-05 to #04-05 #01-31\* to #04-31\*  
 #02-27 to #04-27  
 #01-64 to #04-64



Areas include AC ledge and balcony, where applicable. All RC ledges are non-load bearing. The plans are subjected to change as may be required by relevant authorities. All areas and measurements stated herein as approximate and subject to final survey.



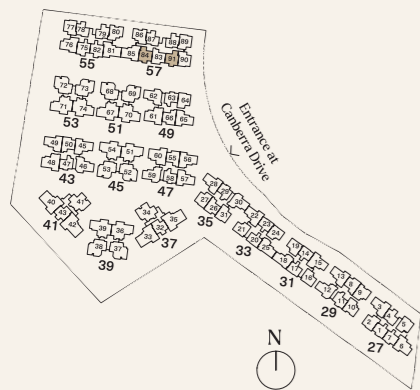
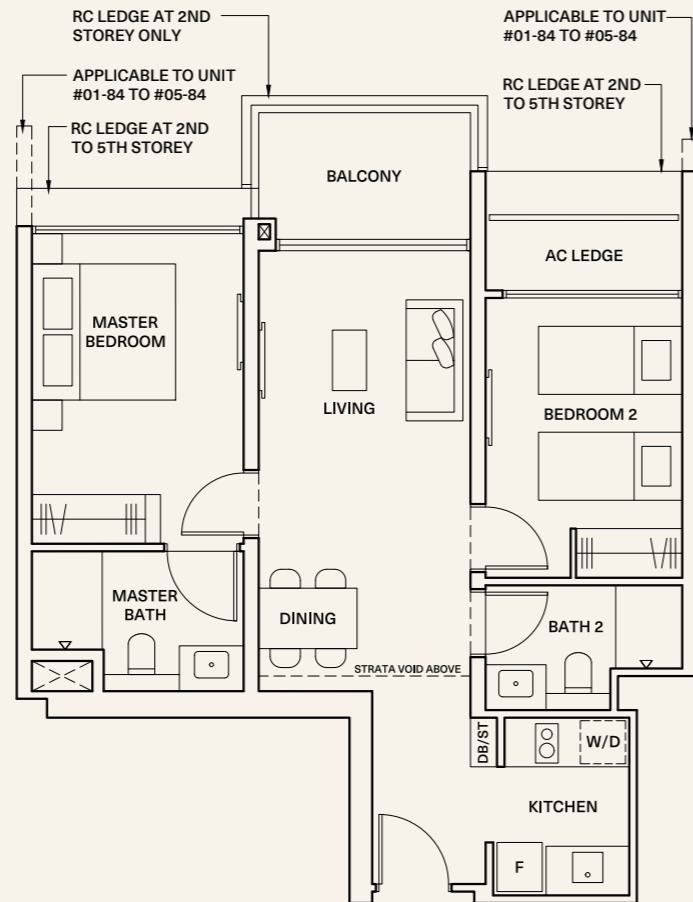
● 2 Bedroom Premium

TYPE 2P4  
 SIZE 70 sqm (753 sqft)

#01-84 to #04-84 \*Mirror  
 #01-91\* to #04-91\*

TYPE 2P4-PH  
 SIZE 87 sqm (936 sqft)

Inclusive of strata void area of  
 17 sqm / 183 sqft above living and dining  
 \*Mirror  
 #05-84 #05-91\*



Areas include AC ledge and balcony, where applicable. All RC ledges are non-load bearing. The plans are subjected to change as may be required by relevant authorities. All areas and measurements stated herein as approximate and subject to final survey.

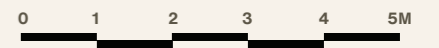
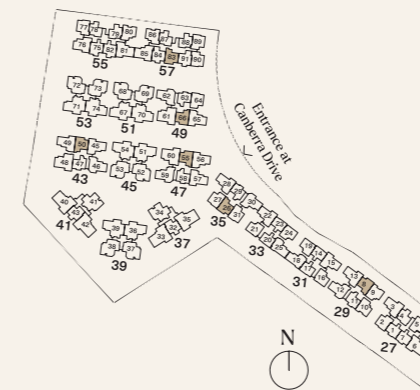
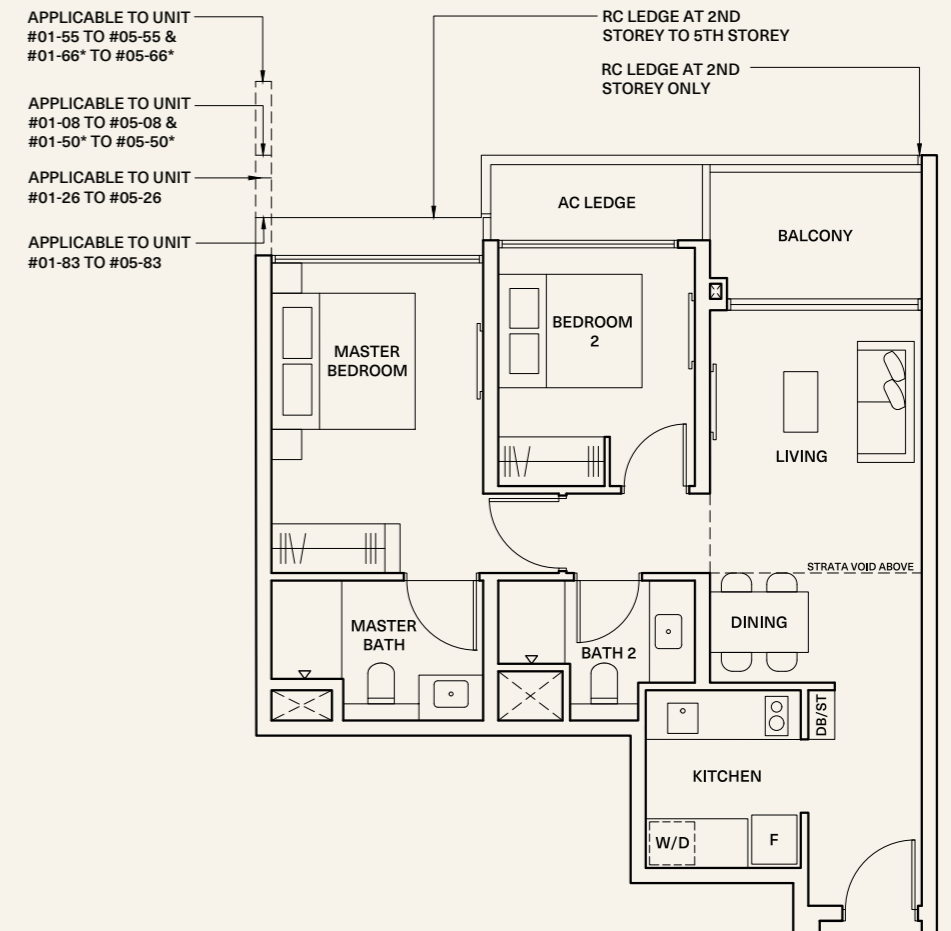
● 2 Bedroom Premium

TYPE 2P5  
 SIZE 70 sqm (753 sqft)

#01-08 to #04-08 \*Mirror  
 #01-26 to #04-26 #01-50\* to #04-50\*  
 #01-55 to #04-55 #01-66\* to #04-66\*  
 #01-83 to #04-83

TYPE 2P5-PH  
 SIZE 81 sqm (872 sqft)

Inclusive of strata void area of  
 11 sqm / 118 sqft above living and dining  
 \*Mirror  
 #05-08 #05-55 #05-50\*  
 #05-26 #05-83 #05-66\*



Areas include AC ledge and balcony, where applicable. All RC ledges are non-load bearing. The plans are subjected to change as may be required by relevant authorities. All areas and measurements stated herein as approximate and subject to final survey.

● 2 Bedroom Premium

TYPE 2P6  
 SIZE 70 sqm (753 sqft)

\*Mirror  
 #01-75 to #04-75 #01-82\* to #04-82\*

TYPE 2P6-PH  
 SIZE 84 sqm (904 sqft)

Inclusive of strata void area of  
 14 sqm / 151 sqft above living and dining  
 \*Mirror  
 #05-75 #05-82\*

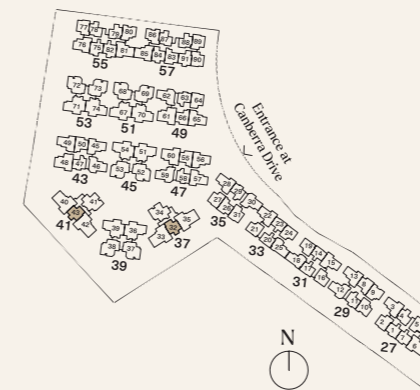
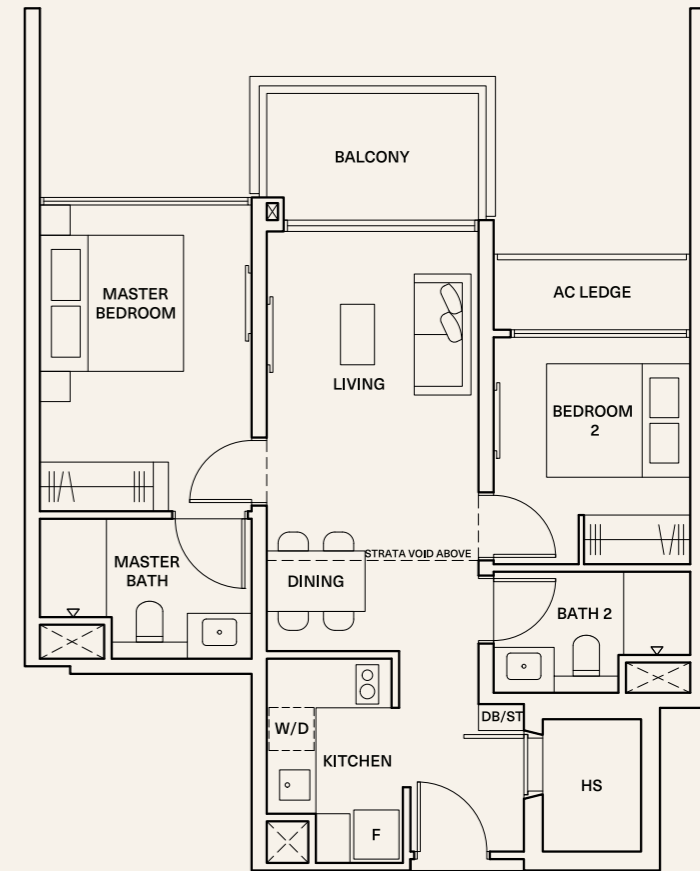
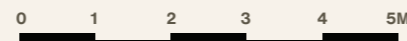
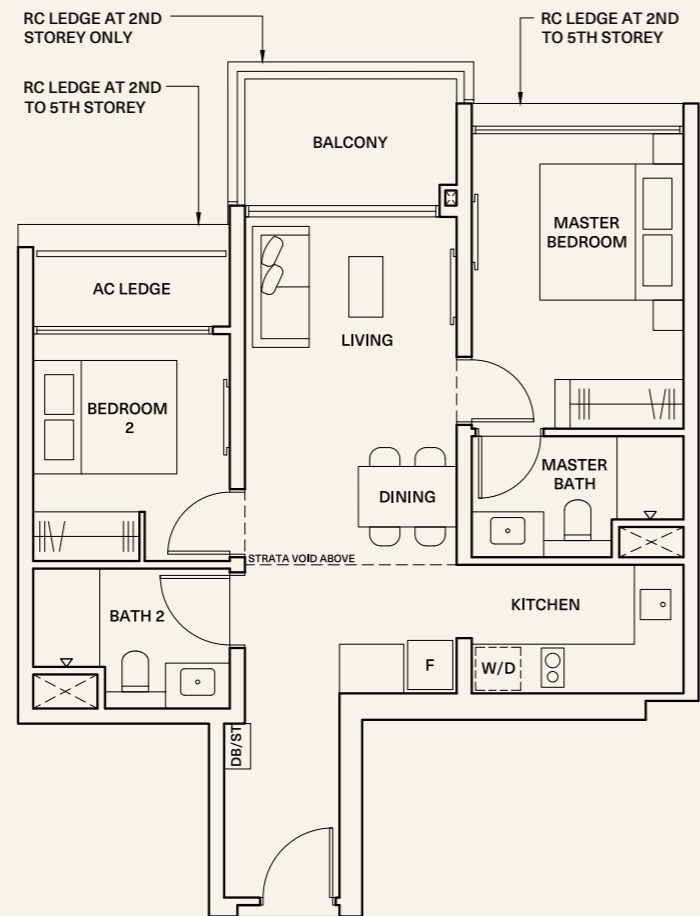
● 2 Bedroom Premium

TYPE 2P7  
 SIZE 70 sqm (753 sqft)

\*Mirror  
 #01-32 to #04-32 #01-43\* to #04-43\*

TYPE 2P7-PH  
 SIZE 83 sqm (893 sqft)

Inclusive of strata void area of  
 13 sqm / 140 sqft above living and dining  
 \*Mirror  
 #05-32 #05-43\*



Areas include AC ledge and balcony, where applicable. All RC ledges are non-load bearing. The plans are subjected to change as may be required by relevant authorities. All areas and measurements stated herein as approximate and subject to final survey.

Areas include AC ledge and balcony, where applicable. All RC ledges are non-load bearing. The plans are subjected to change as may be required by relevant authorities. All areas and measurements stated herein as approximate and subject to final survey.

● 2 Bedroom Premium + Study

TYPE 2PS1

SIZE 74 sqm (797 sqft)

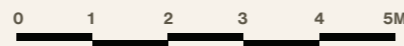
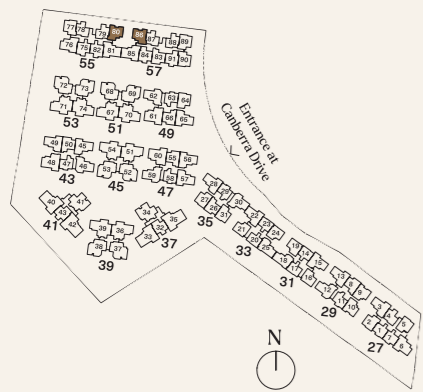
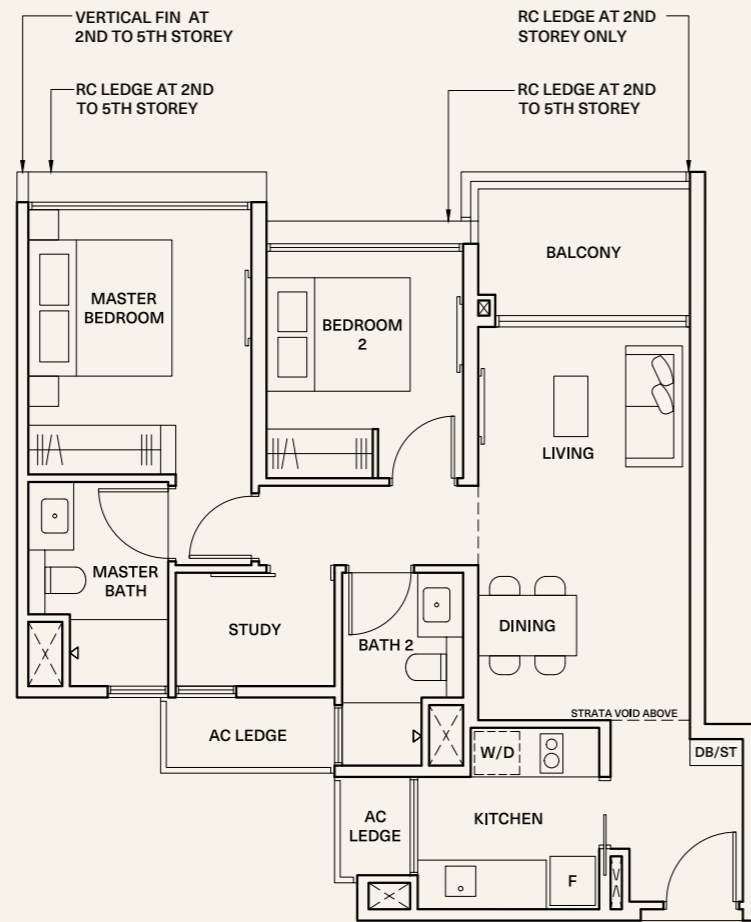
#01-86 to #04-86 \*Mirror  
#01-80\* to #04-80\*

TYPE 2PS1-PH

SIZE 90 sqm (969 sqft)

Inclusive of strata void area of  
16 sqm / 172 sqft above living and dining

\*Mirror  
#05-86 #05-80\*



Areas include AC ledge and balcony, where applicable. All RC ledges are non-load bearing. The plans are subjected to change as may be required by relevant authorities. All areas and measurements stated herein as approximate and subject to final survey.

● 2 Bedroom Premium + Study

TYPE 2PS2

SIZE 74 sqm (797 sqft)

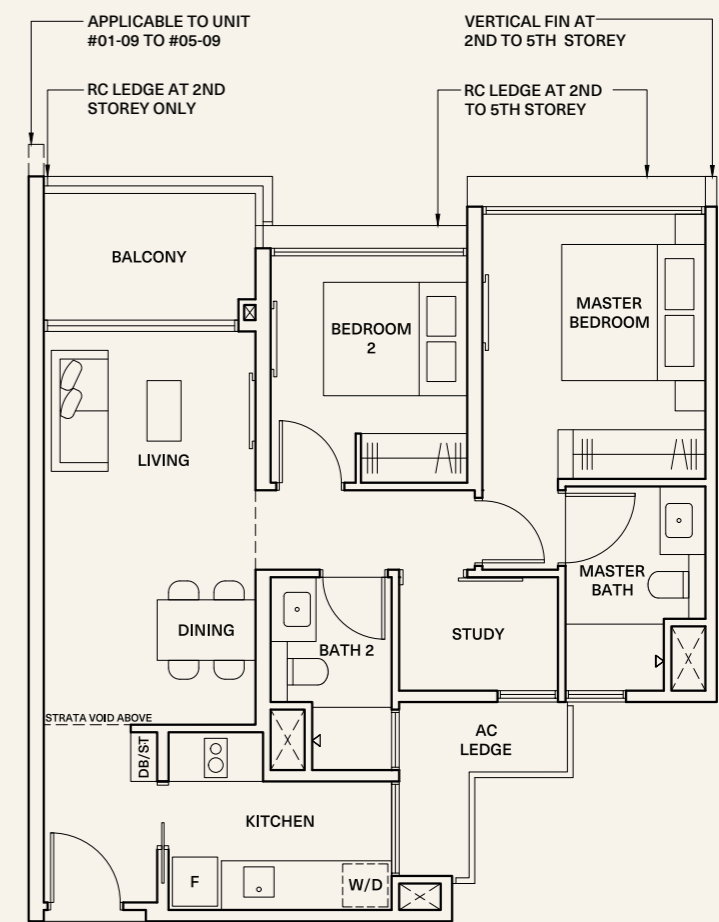
#01-09 to #04-09 \*Mirror  
#01-10\* to #04-10\*

TYPE 2PS2-PH

SIZE 90 sqm (969 sqft)

Inclusive of strata void area of  
16 sqm / 172 sqft above living and dining

\*Mirror  
#05-09 #05-10\*



Areas include AC ledge and balcony, where applicable. All RC ledges are non-load bearing. The plans are subjected to change as may be required by relevant authorities. All areas and measurements stated herein as approximate and subject to final survey.



3 Bedroom

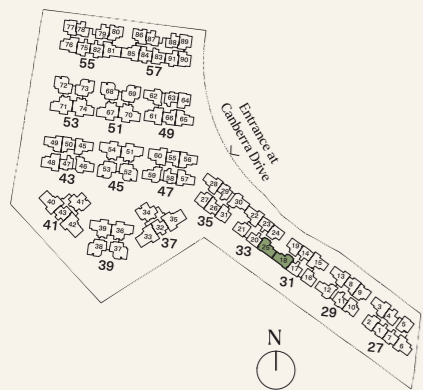
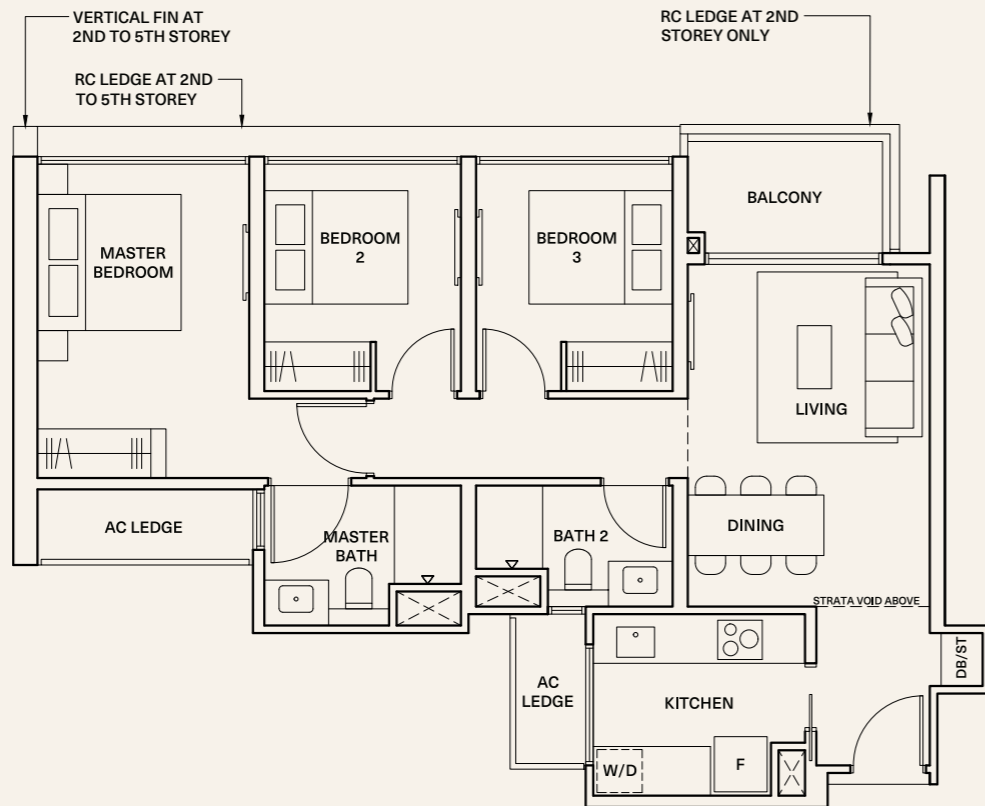
TYPE 3C1  
 SIZE 84 sqm (904 sqft)

\*Mirror  
 #01-25 to #04-25 #01-18\* to #04-18\*

TYPE 3C1-PH  
 SIZE 100 sqm (1,076 sqft)

Inclusive of strata void area of  
 16 sqm / 172 sqft above living and dining

\*Mirror  
 #05-25 #05-18\*

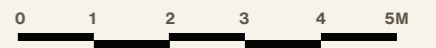
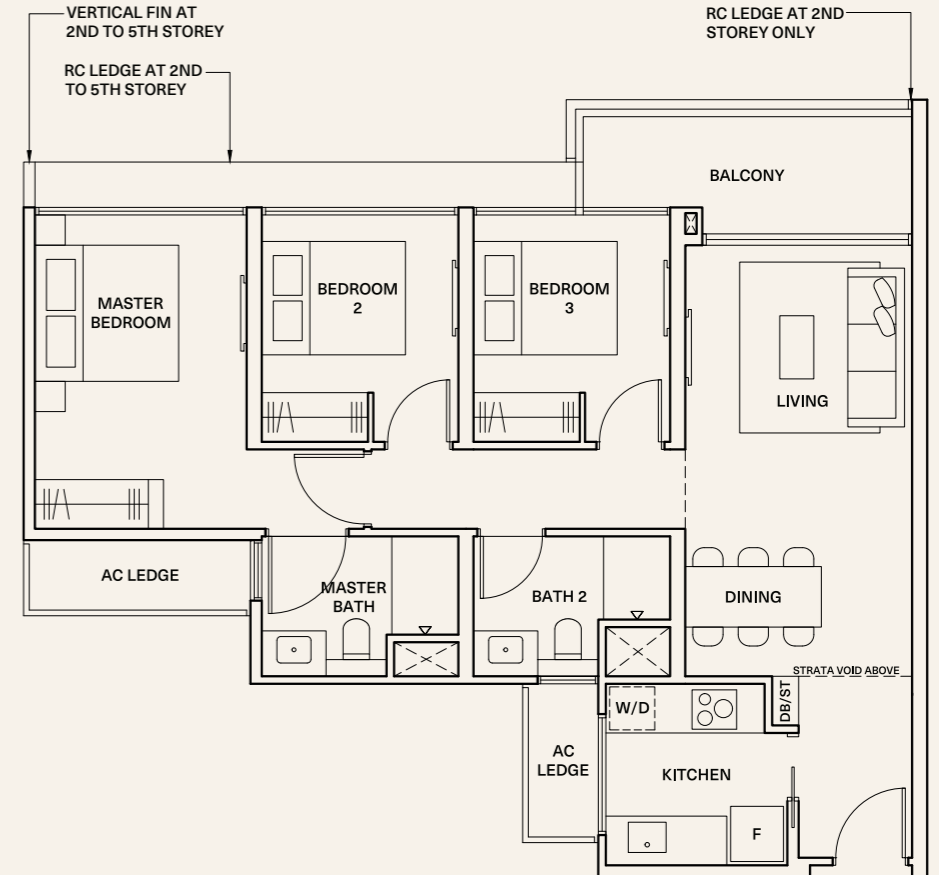


Areas include AC ledge and balcony, where applicable. All RC ledges are non-load bearing. The plans are subjected to change as may be required by relevant authorities. All areas and measurements stated herein as approximate and subject to final survey.

3 Bedroom

TYPE 3C2  
 SIZE 89 sqm (958 sqft)

\*Mirror  
 #01-03 to #04-03 #01-15\* to #04-15\*  
 #01-13 to #04-13 #01-45\* to #04-45\*  
 #01-22 to #04-22 #01-56\* to #04-56\*  
 #02-28 to #04-28  
 #01-49 to #04-49  
 #01-57 to #04-57  
 #01-65 to #04-65



Areas include AC ledge and balcony, where applicable. All RC ledges are non-load bearing. The plans are subjected to change as may be required by relevant authorities. All areas and measurements stated herein as approximate and subject to final survey.

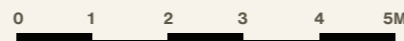
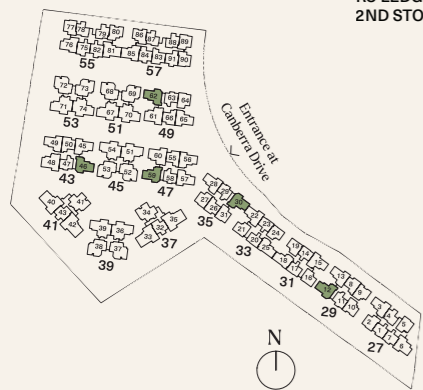
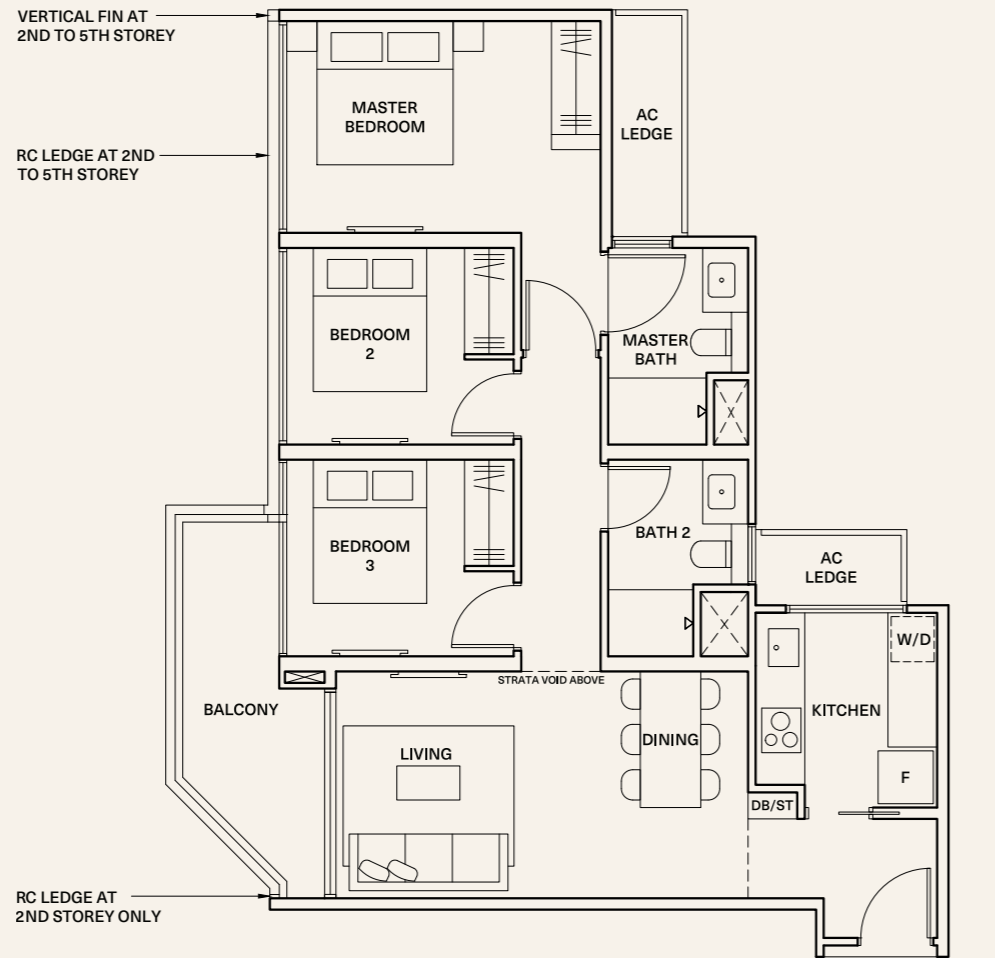
3 Bedroom

TYPE 3C3  
 SIZE 89 sqm (958 sqft)

\*Mirror  
 #01-12 to #04-12  
 #01-30 to #04-30  
 #01-59 to #04-59  
 #01-46\* to #04-46\*  
 #01-62\* to #04-62\*

TYPE 3C3-PH  
 SIZE 107 sqm (1,152 sqft)

Inclusive of strata void area of  
 18 sqm / 194 sqft above living and dining  
 \*Mirror  
 #05-12 #05-46\*  
 #05-30 #05-62\*  
 #05-59



Areas include AC ledge and balcony, where applicable. All RC ledges are non-load bearing. The plans are subjected to change as may be required by relevant authorities. All areas and measurements stated herein as approximate and subject to final survey.

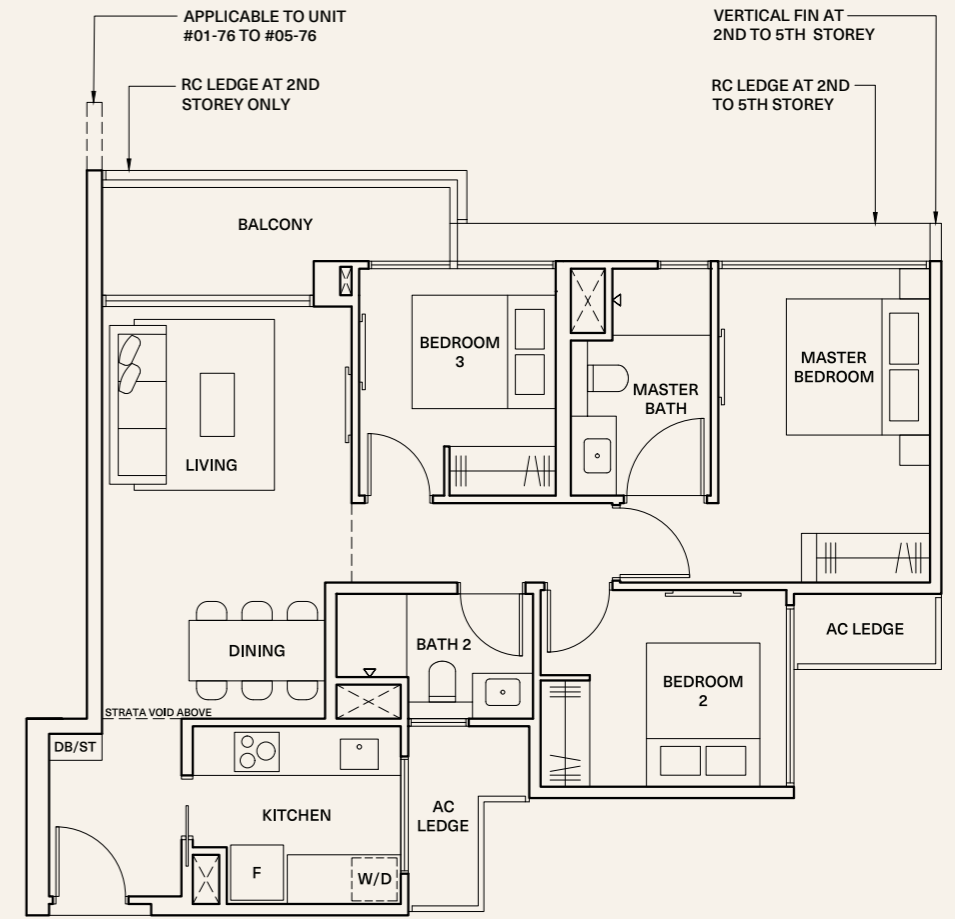
3 Bedroom

TYPE 3C4  
 SIZE 89 sqm (958 sqft)

\*Mirror  
 #01-76 to #04-76  
 #01-06\* to #04-06\*

TYPE 3C4-PH  
 SIZE 108 sqm (1,163 sqft)

Inclusive of strata void area of  
 19 sqm / 205 sqft above living and dining  
 \*Mirror  
 #05-76 #05-06\*



Areas include AC ledge and balcony, where applicable. All RC ledges are non-load bearing. The plans are subjected to change as may be required by relevant authorities. All areas and measurements stated herein as approximate and subject to final survey.

● 3 Bedroom + Study

TYPE 3CS1

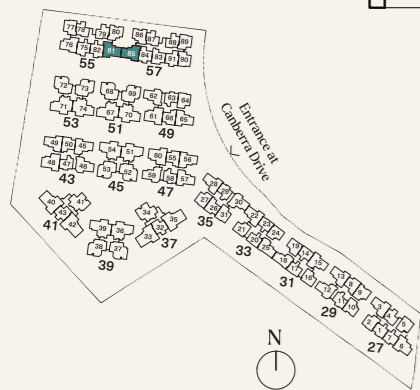
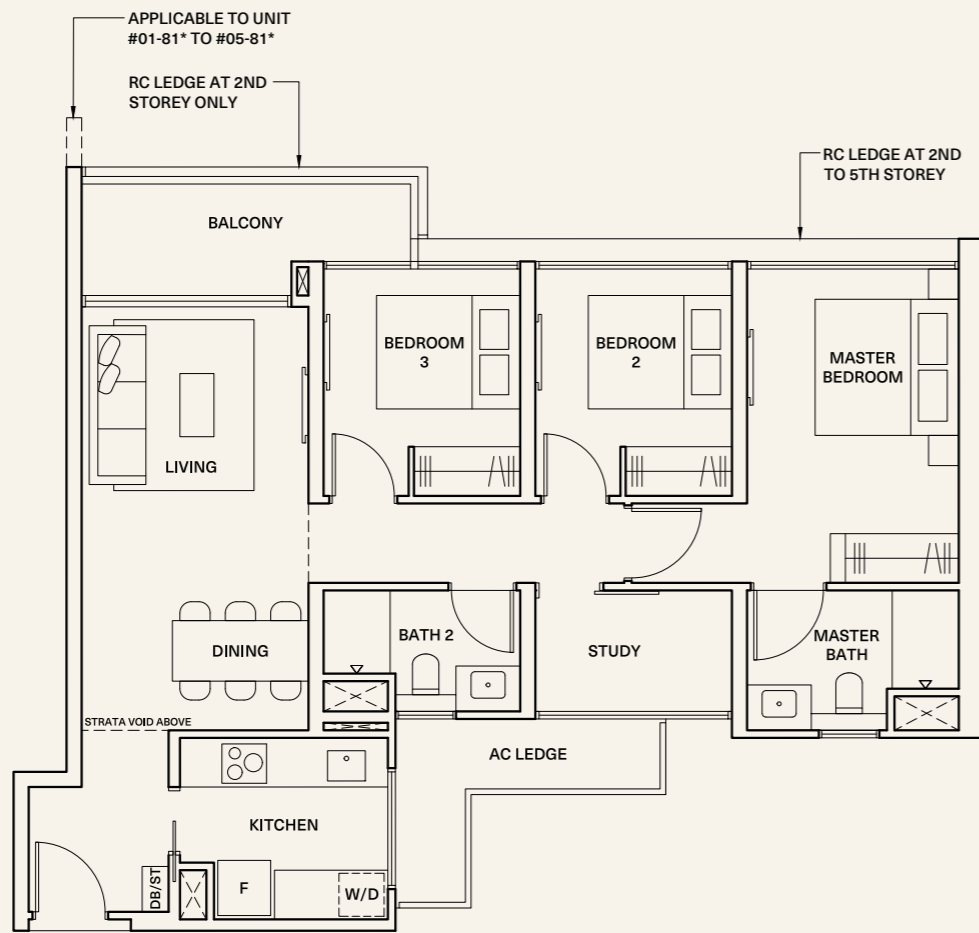
SIZE 94 sqm (1,012 sqft)

#01-85 to #04-85 \*Mirror #01-81\* to #04-81\*

TYPE 3CS1-PH

SIZE 112 sqm (1,206 sqft)

Inclusive of strata void area of 18 sqm / 194 sqft above living and dining  
\*Mirror #05-85 #05-81\*



● 3 Bedroom Premium + Study

TYPE 3PS1

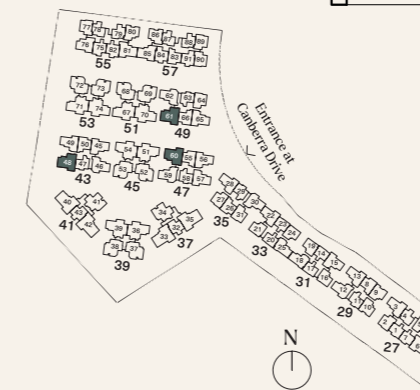
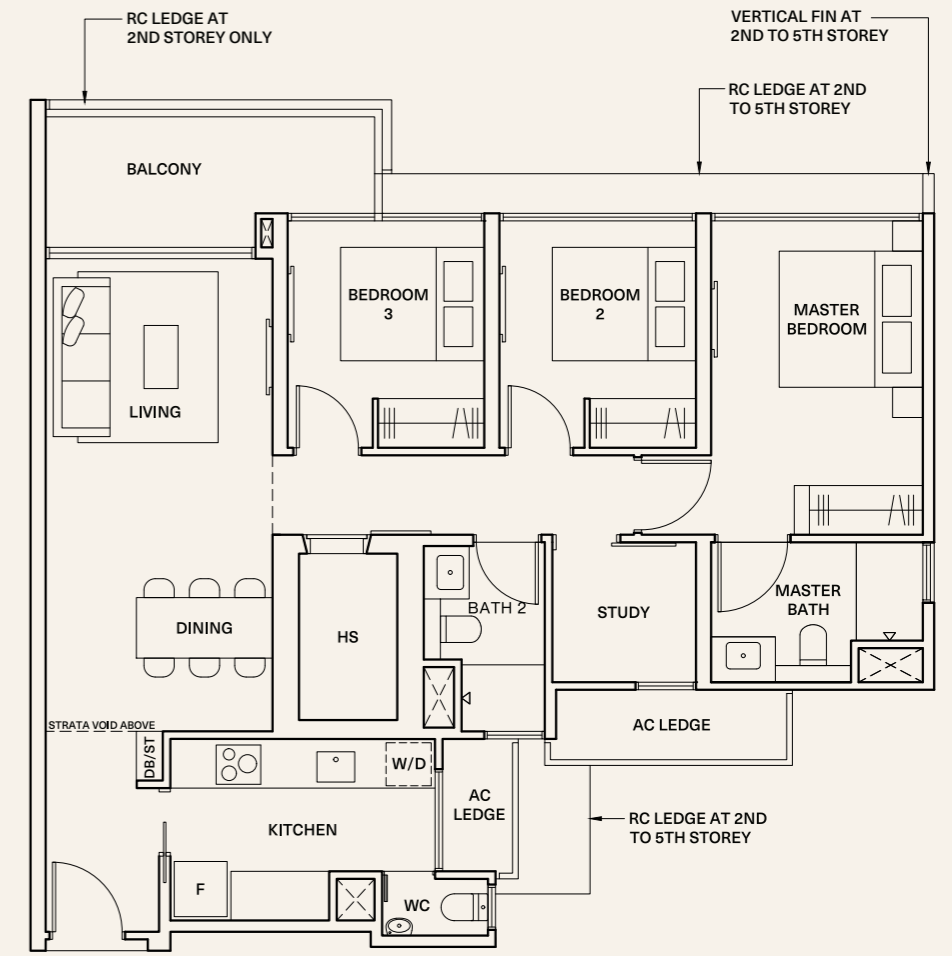
SIZE 103 sqm (1,109 sqft)

#01-48 to #04-48 \*Mirror #01-60\* to #04-60\*  
#01-61 to #04-61

TYPE 3PS1-PH

SIZE 123 sqm (1,324 sqft)

Inclusive of strata void area of 20 sqm / 215 sqft above living and dining  
\*Mirror #05-48 #05-60\*  
#05-61



Areas include AC ledge and balcony, where applicable. All RC ledges are non-load bearing. The plans are subjected to change as may be required by relevant authorities. All areas and measurements stated herein as approximate and subject to final survey.

Areas include AC ledge and balcony, where applicable. All RC ledges are non-load bearing. The plans are subjected to change as may be required by relevant authorities. All areas and measurements stated herein as approximate and subject to final survey.



● 3 Bedroom Premium + Study

TYPE 3PS2-P

SIZE 103 sqm (1,109 sqft)

#01-38 \*Mirror #01-37\*

TYPE 3PS2

SIZE 103 sqm (1,109 sqft)

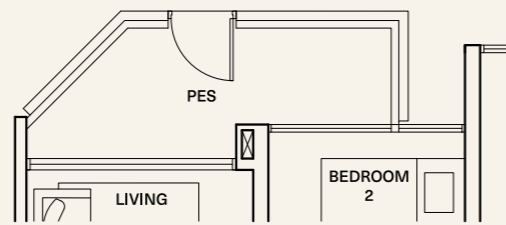
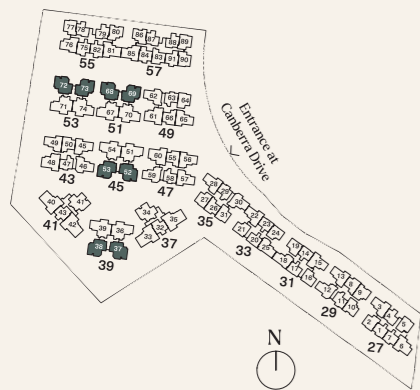
#02-38 to #04-38 \*Mirror #02-37\* to #04-37\*  
 #01-53 to #04-53 #01-52\* to #04-52\*  
 #01-69 to #04-69 #01-68\* to #04-68\*  
 #01-73 to #04-73 #01-72\* to #04-72\*

TYPE 3PS2-PH

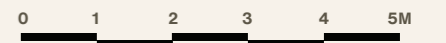
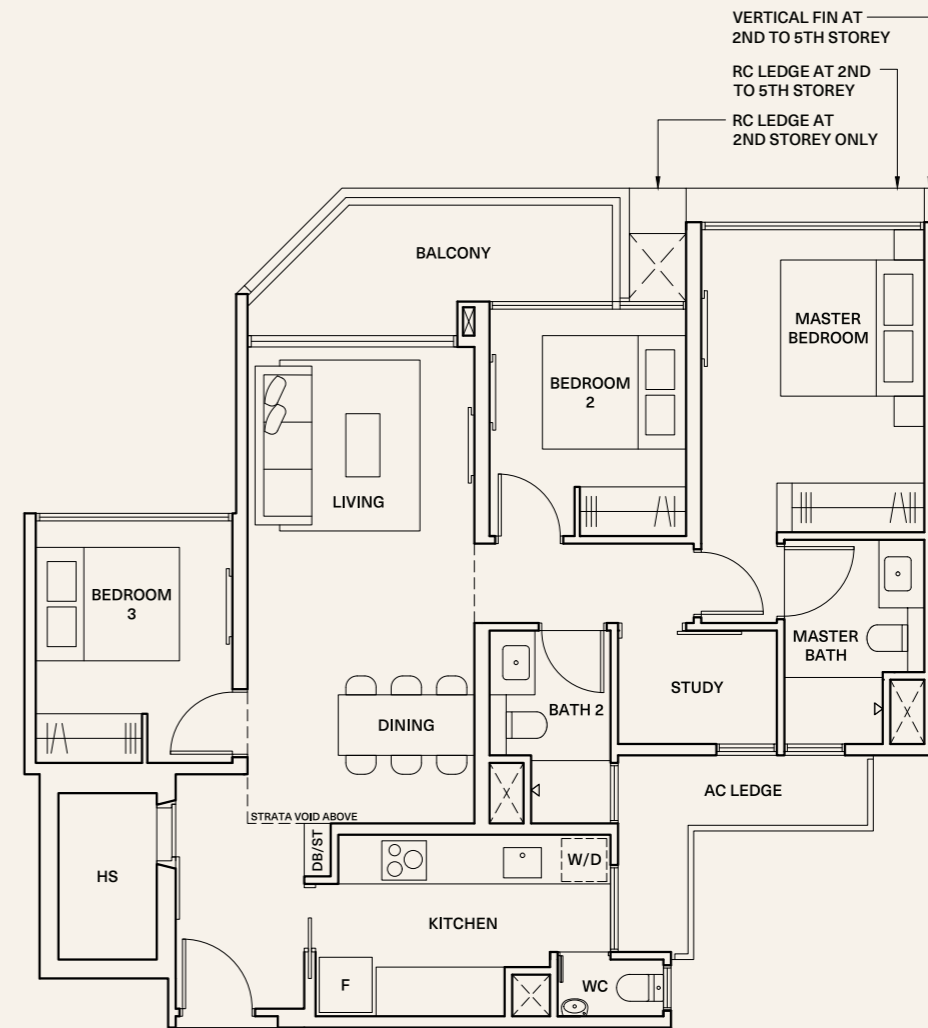
SIZE 123 sqm (1,324 sqft)

Inclusive of strata void area of  
 20 sqm / 215 sqft above living and dining

#05-38 \*Mirror #05-37\*  
 #05-53 #05-52\*  
 #05-69 #05-68\*  
 #05-73 #05-72\*



Applicable to unit:  
 #01-37\* & #01-38



Areas include AC ledge and balcony, where applicable. All RC ledges are non-load bearing. The plans are subjected to change as may be required by relevant authorities. All areas and measurements stated herein as approximate and subject to final survey.

● 3 Bedroom Premium + Study

TYPE 3PS3

SIZE 103 sqm (1,109 sqft)

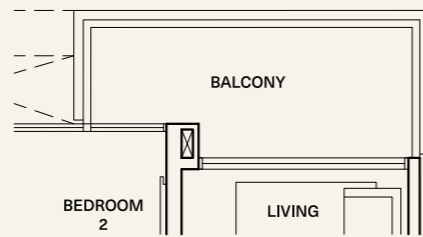
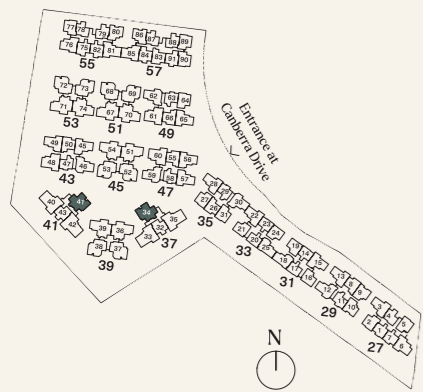
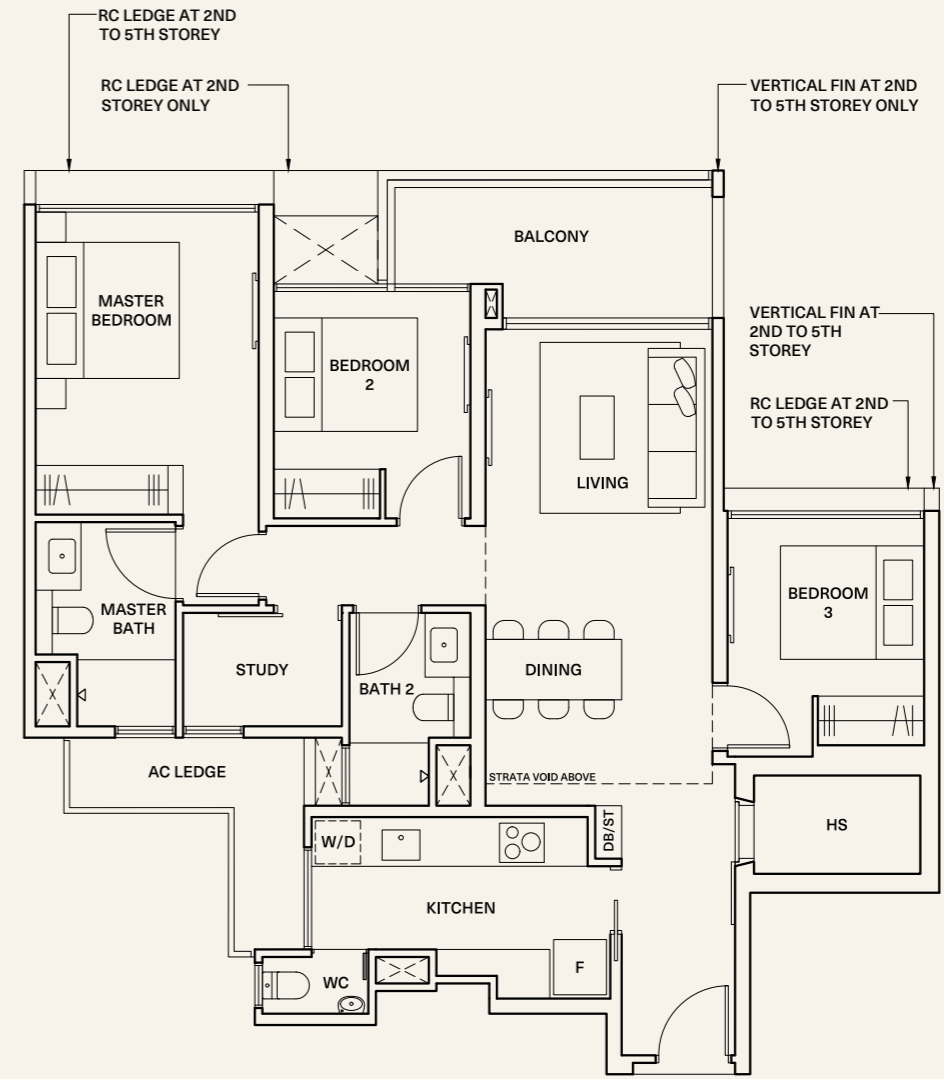
#01-34 to #04-34 \*Mirror  
#01-41\* to #04-41\*

TYPE 3PS3-PH

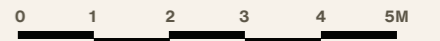
SIZE 122 sqm (1,313 sqft)

Inclusive of strata void area of  
19 sqm / 205 sqft above living and dining

#05-34 \*Mirror  
#05-41\* #05-41\*



Applicable to unit:  
#01-34 & #01-41\*



Areas include AC ledge and balcony, where applicable. All RC ledges are non-load bearing. The plans are subjected to change as may be required by relevant authorities. All areas and measurements stated herein as approximate and subject to final survey.

● 4 Bedroom Premium

TYPE 4P1

SIZE 121 sqm (1,302 sqft)

\*Mirror

- #01-39 to #04-39      #01-36\* to #04-36\*
- #01-54 to #04-54      #01-51\* to #04-51\*
- #01-70 to #04-70      #01-67\* to #04-67\*
- #01-74 to #04-74      #01-71\* to #04-71\*

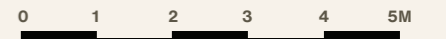
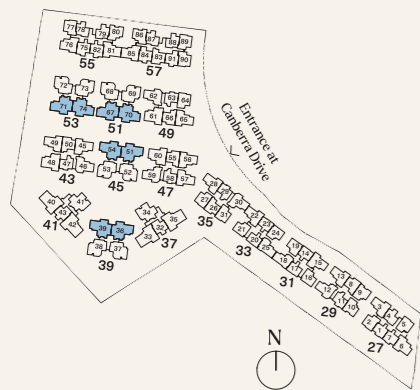
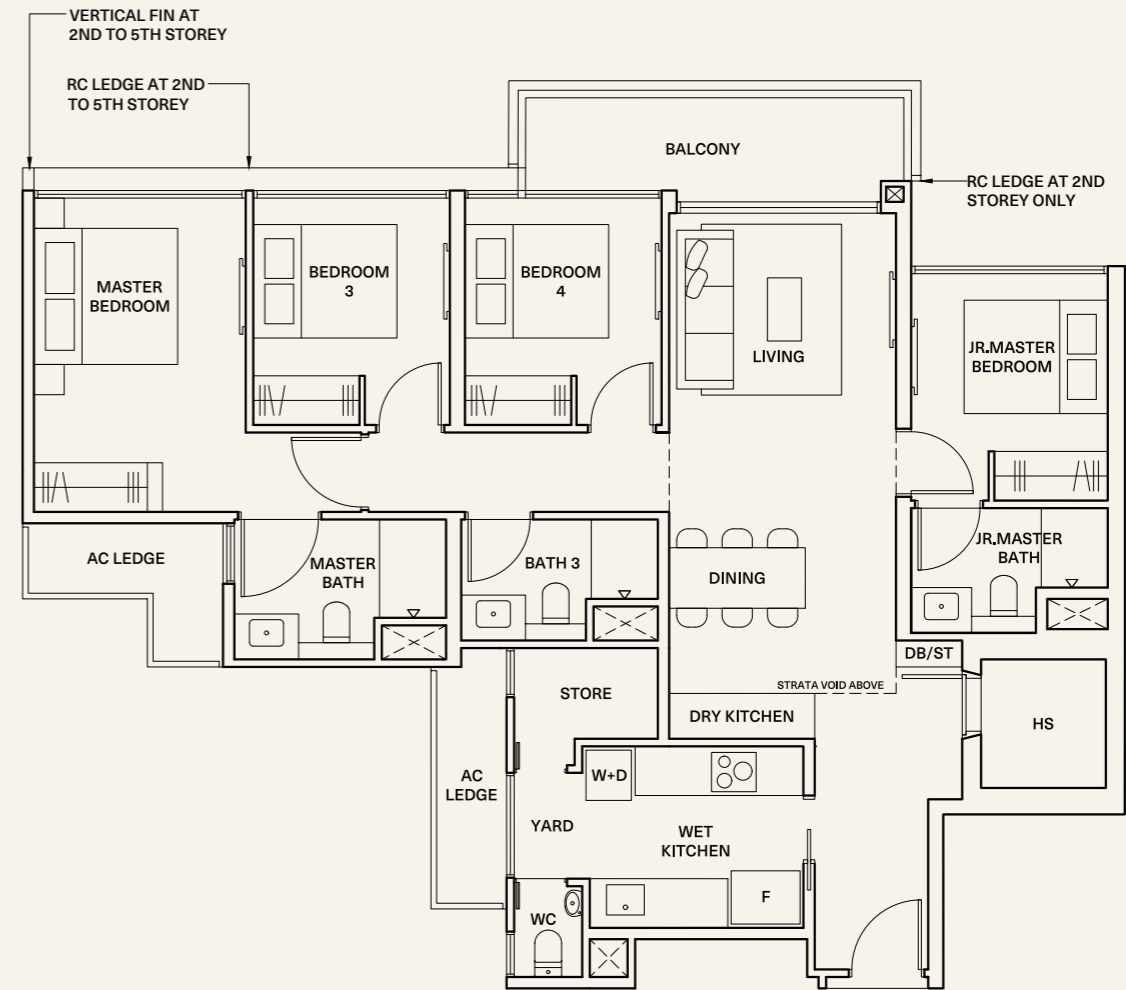
TYPE 4P1-PH

SIZE 142 sqm (1,528 sqft)

Inclusive of strata void area of  
21 sqm / 226 sqft above living and dining

\*Mirror

- #05-39      #05-36\*
- #05-54      #05-51\*
- #05-70      #05-67\*
- #05-74      #05-71\*



Areas include AC ledge and balcony, where applicable. All RC ledges are non-load bearing. The plans are subjected to change as may be required by relevant authorities. All areas and measurements stated herein as approximate and subject to final survey.

● 4 Bedroom Premium

TYPE 4P2

SIZE 121 sqm (1,302 sqft)

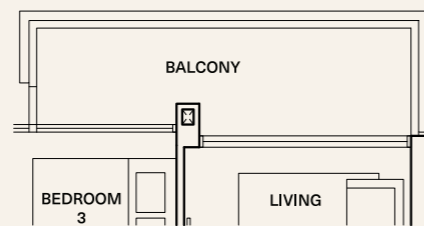
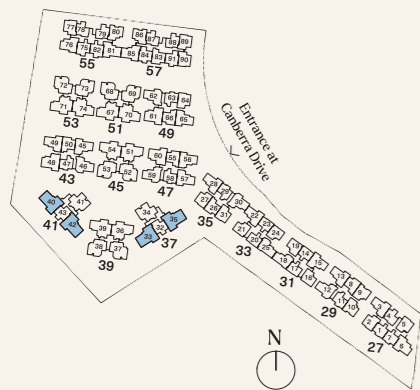
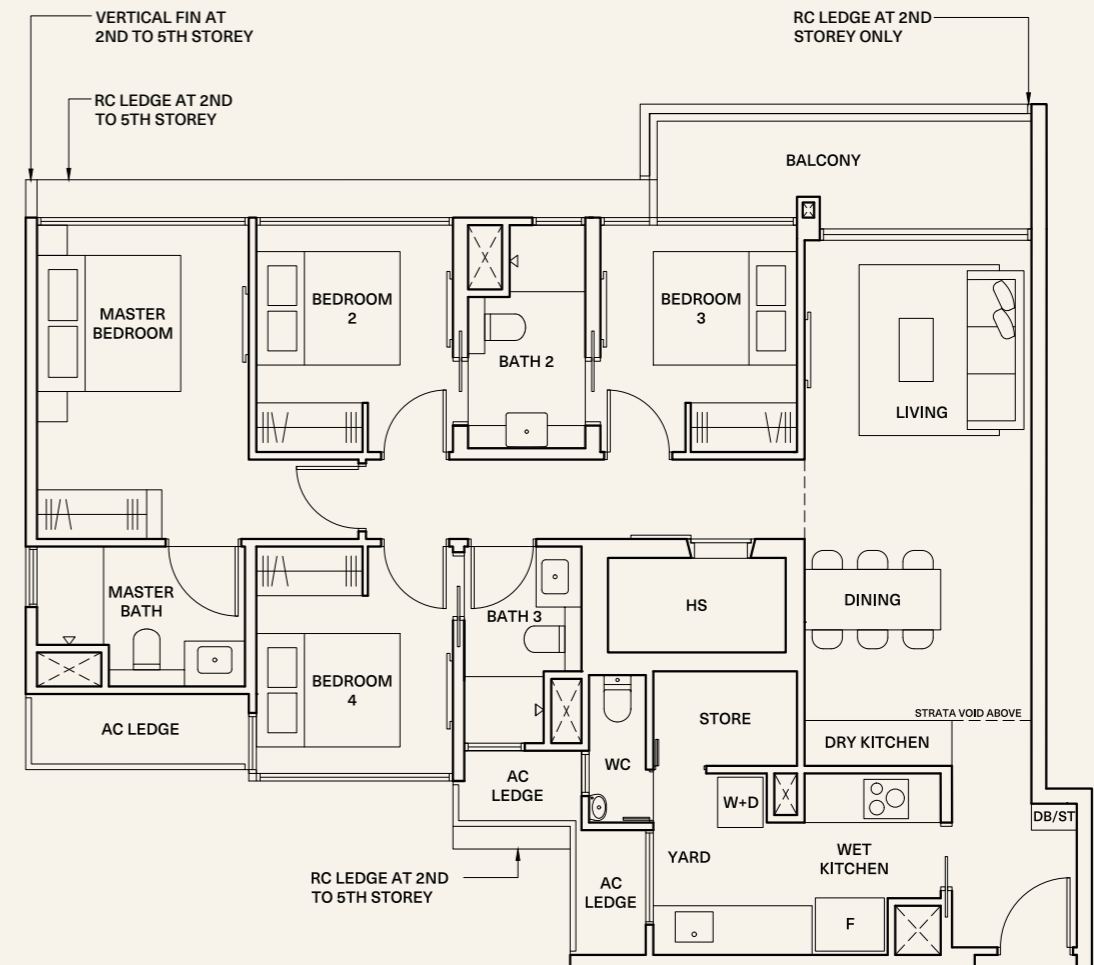
\*Mirror  
 #01-35 to #04-35 #01-33\* to #04-33\*  
 #01-42 to #04-42 #01-40\* to #04-40\*

TYPE 4P2-PH

SIZE 142 sqm (1,528 sqft)

Inclusive of strata void area of  
 21 sqm / 226 sqft above living and dining

\*Mirror  
 #05-35 #05-33\*  
 #05-42 #05-40\*



Applicable to unit:  
 #01-33\*, #01-35, #01-40\* and #01-42



Areas include AC ledge and balcony, where applicable. All RC ledges are non-load bearing. The plans are subjected to change as may be required by relevant authorities. All areas and measurements stated herein as approximate and subject to final survey.